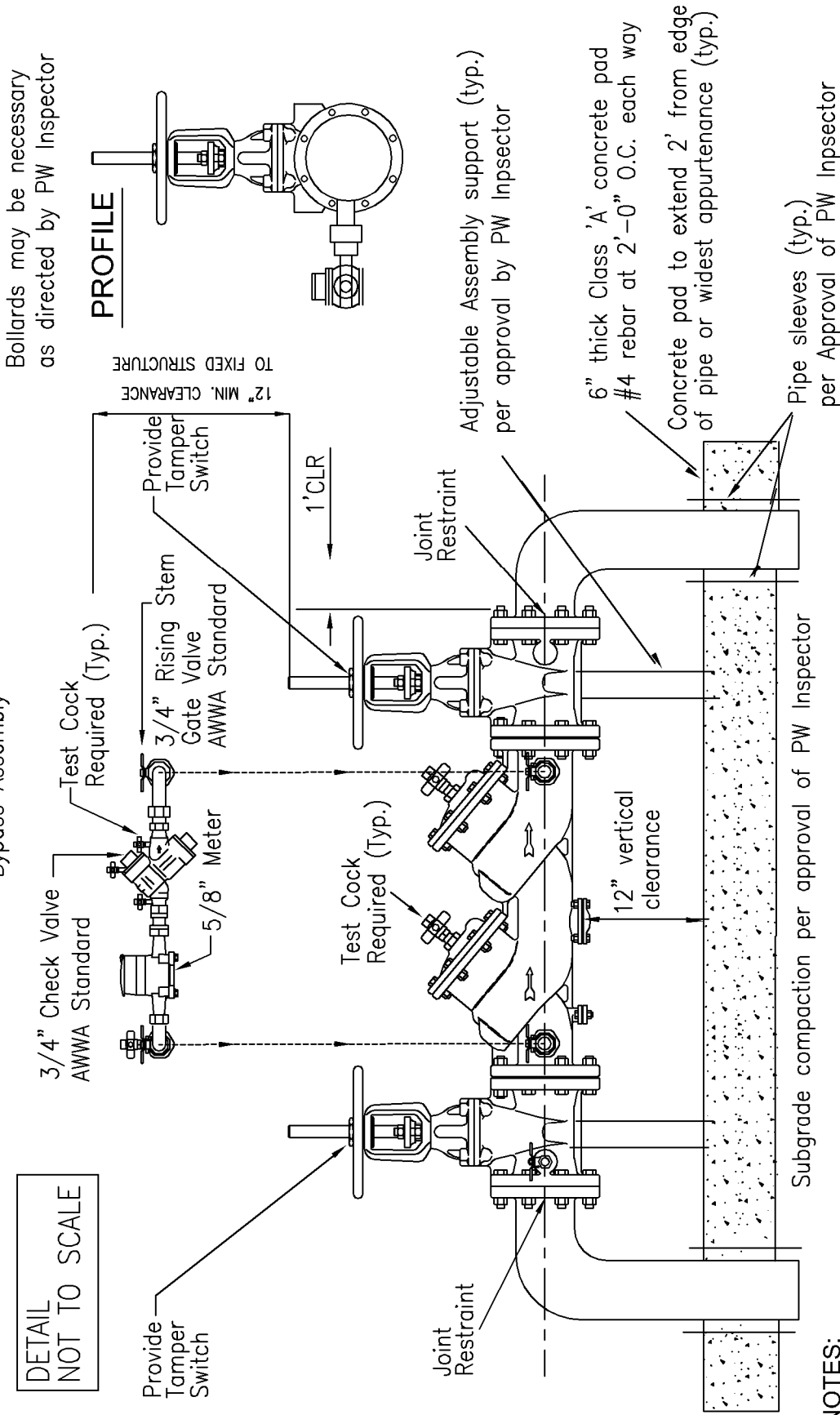


DOUBLE CHECK DETECTOR ASSEMBLY

Assembly must be listed on the San Mateo County Environmental Health Services list of Approved Devices or Approved by City Engineer

Bypass Assembly

DETAIL NOT TO SCALE



Bollards may be necessary as directed by PW Inspector

PROFILE

NOTES:

1. Contractor shall submit shop drawings for the Double Check Detector Assembly and Meter Box to Engineering Division for review and approval before actual installation.
2. A Reduced Pressure Detector Assembly may be required for high hazard condition with back pressure situation according to the Plumbing Code.
3. Installation of Double Check Valve Assembly shall meet requirements in AWWA Standard C510-07.
4. Double check valve assembly shall be located directly behind the meter. In no case shall a cut, tee, or tap be made between the user's meter and the backflow prevention assembly.

STANDARD
DETAIL

DATE: 12/17/13

CITY OF BRISBANE
DEPARTMENT OF PUBLIC WORKS

DOUBLE CHECK DETECTOR
ASSEMBLY

W-8A